

MODEL # CIMR-VU	VOLTAGE SINGLE PHASE (VAC)	OUTPUT CURRENT (A)		WEIGHT LBS (Kg)	HEAT LOSS (W)					
					ND (Fc=2kHz)			HD (Fc=8kHz)		
		ND	HD		INT	EXT	TOT	INT	EXT	TOT
BA0018BXX	208/240	-	17.5	6.6 (3.0)	-	-	-	51.4	110.5	161.9

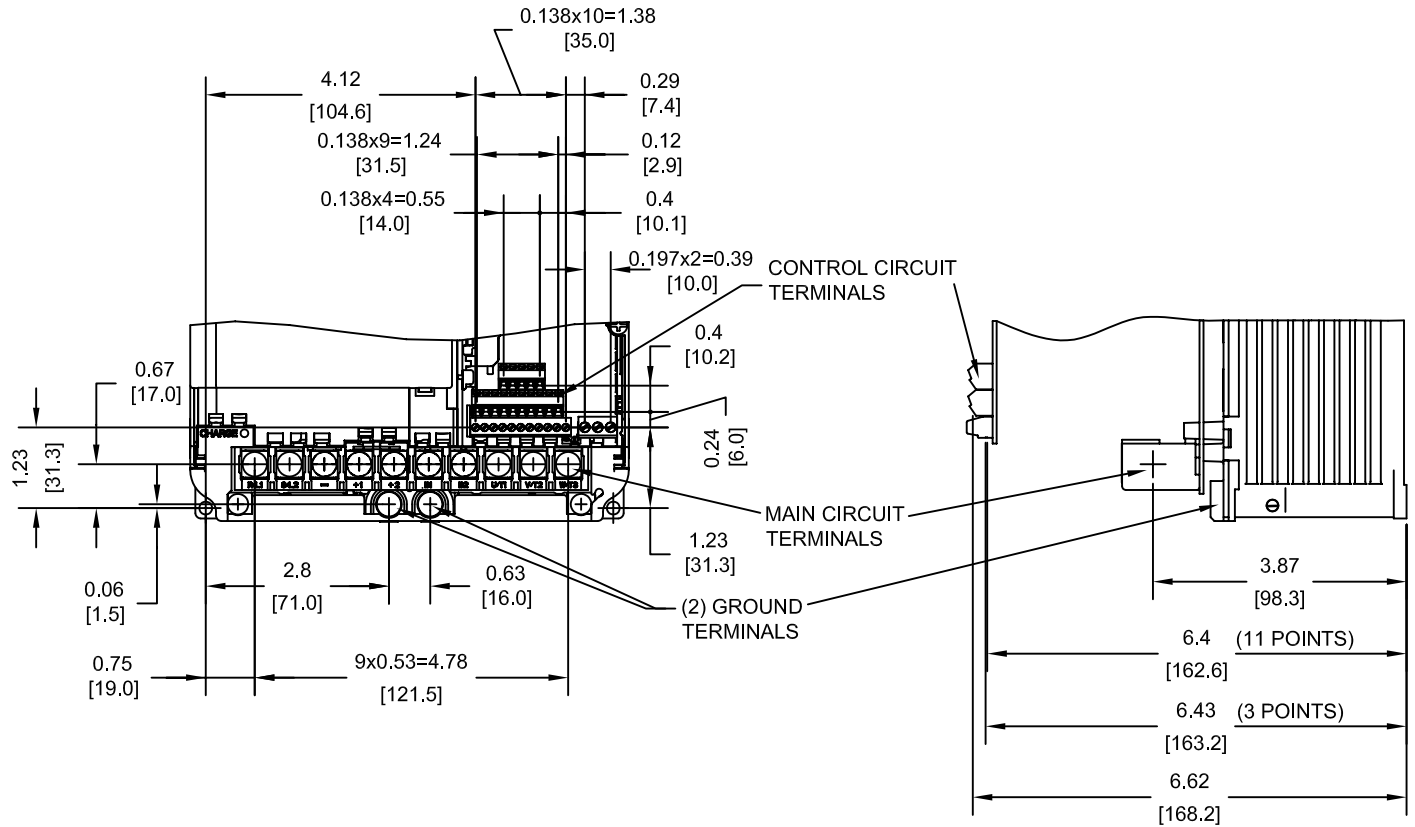
NOTE:
XX DENOTES AA-ZZ

INT=INTERNAL COMPONENTS
EXT=EXTERNAL HEATSINK
TOT=TOTAL

FOR ADDITIONAL DETAILS AND SPECIFICATIONS, CONSULT MANUAL

TOLERANCES / REFERENCES:			DRAWN: J. MATTAS DATE: 1-27-09	TITLE: V1000 DIMENSION DRAWING FRAME SIZE 13 OPEN ENCLOSURE (IP20 RATING) BA0018B
UNITS: IN [mm] SCALE: 1:4			CHECKED: J. PIOTROWSKI DATE: 8-21-09	TECH: J. CAIRO DATE: 8-24-09
			APPROVED: T. SASADA DATE: 8-28-09	ORIGINAL DESIGN: - DATE: -
			SIZE: A REVISION: R00 PAGE: 1 of 3	DRAWING #: DD.V1K.FR13.IP20

TERMINAL AND WIRING DETAILS (SCALE 1:3)



TERMINAL AND WIRE SPECIFICATIONS FOR
MAIN CIRCUIT AND GROUND

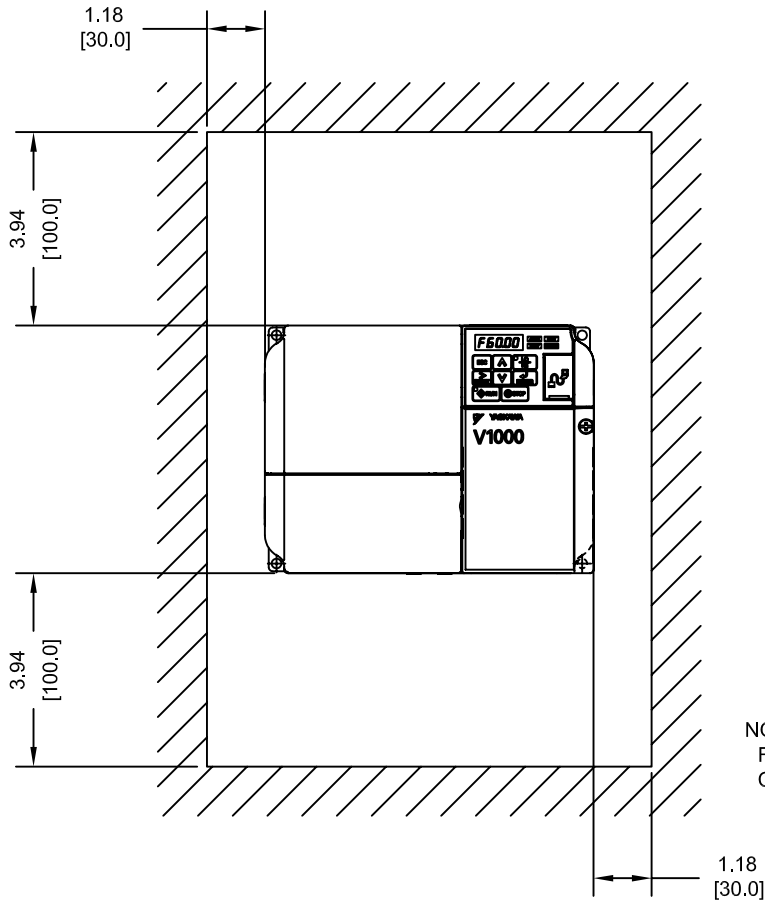
MODEL #	TERMINAL SCREW	CLAMPING TORQUE lb.in.(N.m.)	WIRE RANGE AWG(mm ²)
BA0018B	M5	22.1 (2.5)	12-8 (3.5-8)

NOTE: RATINGS APPLY TO BOTH FACTORY AND FIELD WIRING
REFER TO APPLICABLE CODES FOR PROPER WIRE TYPE AND SIZE

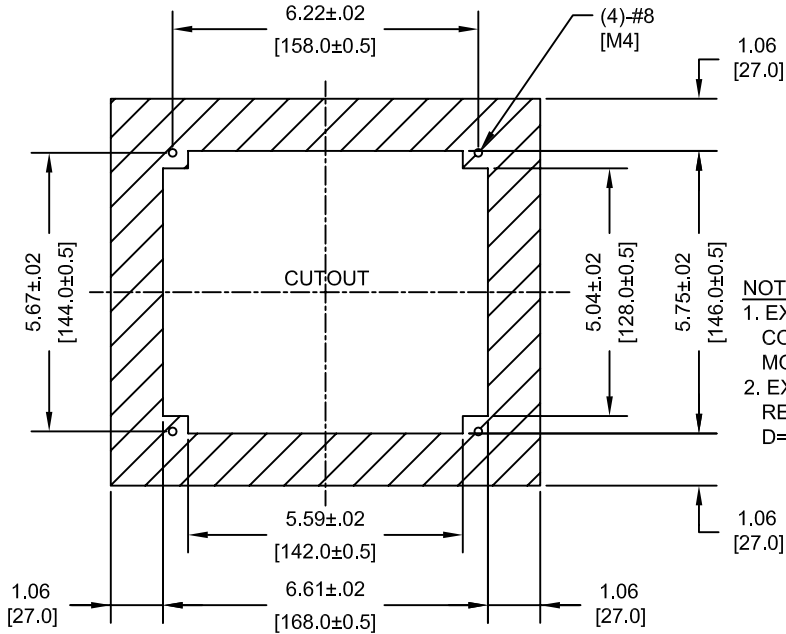
FOR ADDITIONAL DETAILS AND SPECIFICATIONS, CONSULT MANUAL

TOLERANCES / REFERENCES:		<p>THIS DOCUMENT AND INFORMATION CONTAINED IN IT ARE CONFIDENTIAL, AND CANNOT BE COPIED OR DISCLOSED IN WHOLE OR IN PART WITHOUT THE EXPRESS WRITTEN CONSENT OF YASKAWA ELECTRIC AMERICA INC.</p>	DRAWN: J. MATTAS CHECKED: J. PIOTROWSKI TECH: J. CAIRO APPROVED: T. SASADA ORIGINAL DESIGN: -	DATE 1-27-09 DATE 8-21-09 DATE 8-24-09 DATE 8-28-09 DATE -	TITLE: V1000 DIMENSION DRAWING FRAME SIZE 13 OPEN ENCLOSURE (IP20 RATING) BA0018B
UNITS: IN[mm]	SCALE: BY VIEW		SIZE A	REVISION R00	PAGE 2 of 3
			DRAWING #: DD.V1K.FR13.IP20		

MINIMUM INSTALLATION CLEARANCES (SCALE 1:4)



PANEL CUTOUT FOR EXTERNAL HEATSINK MOUNTING CONFIGURATION (SCALE 1:4)



- NOTES:
- EXTERNAL HEATSINK CONFIGURATION REQUIRES MOUNTING KIT
 - EXPOSED HEATSINK RECOMMENDED CLEARANCE D=2.76" MINUS PANEL THICKNESS

TOLERANCES / REFERENCES:



THIS DOCUMENT AND INFORMATION CONTAINED IN IT ARE CONFIDENTIAL, AND CANNOT BE COPIED OR DISCLOSED IN WHOLE OR IN PART WITHOUT THE EXPRESS WRITTEN CONSENT OF YASKAWA ELECTRIC AMERICA INC.

DRAWN: J. MATTAS

CHECKED: J. PIOTROWSKI

TECH: J. CAIRO

APPROVED: T. SASADA

ORIGINAL DESIGN: -

DATE: 1-27-09

DATE: 8-21-09

DATE: 8-24-09

DATE: 8-28-09

DATE: -

TITLE:

V1000 DIMENSION DRAWING
 FRAME SIZE 13
 OPEN ENCLOSURE (IP20 RATING)
 BA0018B

SIZE A	REVISION R00	PAGE 3 of 3
-----------	-----------------	----------------

DRAWING #: DD.V1K.FR13.IP20

UNITS: IN[mm] SCALE: BY VIEW